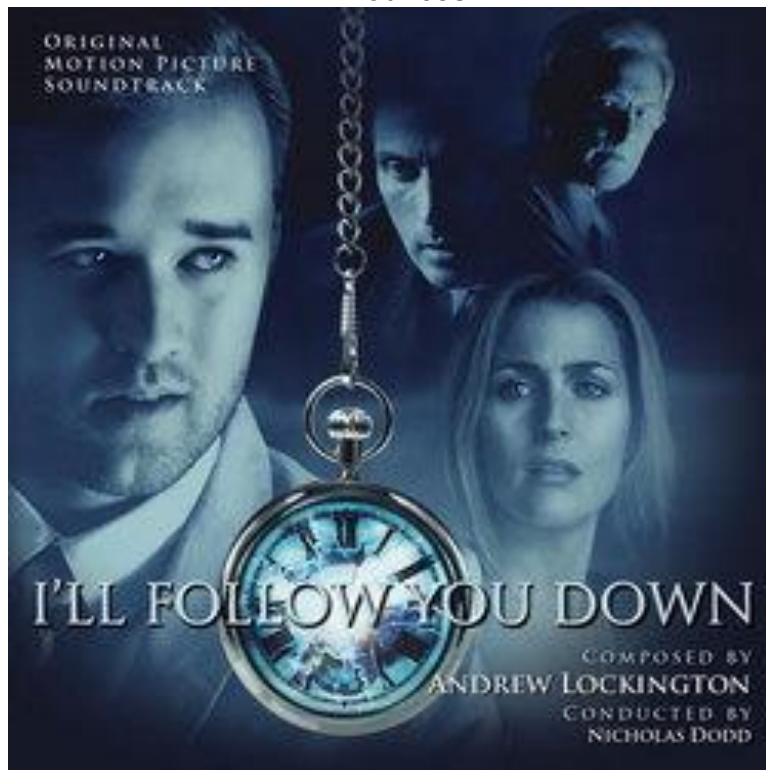




Announces:



I'LL FOLLOW YOU DOWN

Composed by **ANDREW LOCKINGTON**

Conducted by **NICHOLAS DODD**

Intrada Special Collection Volume ISC 334

Composer Andrew Lockington is no newcomer to the sci-fi and fantasy realm. He burst into the consciousness of soundtrack fans with his music for the Jules Verne adaptations *Journey to the Center of the Earth* and *Journey 2: The Mysterious Island*, as well as *City of Ember*, *Percy Jackson: Sea of Monsters* and this summer's *San Andreas*. For the more philosophical *I'll Follow You Down* that left the special effects behind and let the compelling story take center stage, Lockington followed suit and eschewed the epic sound of his earlier work and took a more introspective approach. "The score for *I'll Follow You Down* is the culmination of hundreds of hours of philosophical, moral and scientific discussions with my long-time friend [director] Richie Mehta," says Lockington. As a result, the score reflects the themes and emotions of the characters as they first traverse the mystery and then as the critical time travel mechanism allows them to resolve the mystery.

The score combines piano, harp and chamber strings with eclectic percussion and winds and was recorded at Air Studios in London.

Haley Joel Osment plays Erol, the son of a scientist who disappears on a business trip, leaving him and his mother (Gillian Anderson) to cope (or not cope as it comes to be) with their loss. With his grandfather's help, Erol soon discovers his father's experiments with time travel which has the key to unlocking everything.

Intrada Special Collection Volume ISC 334

Released August 17, 2015