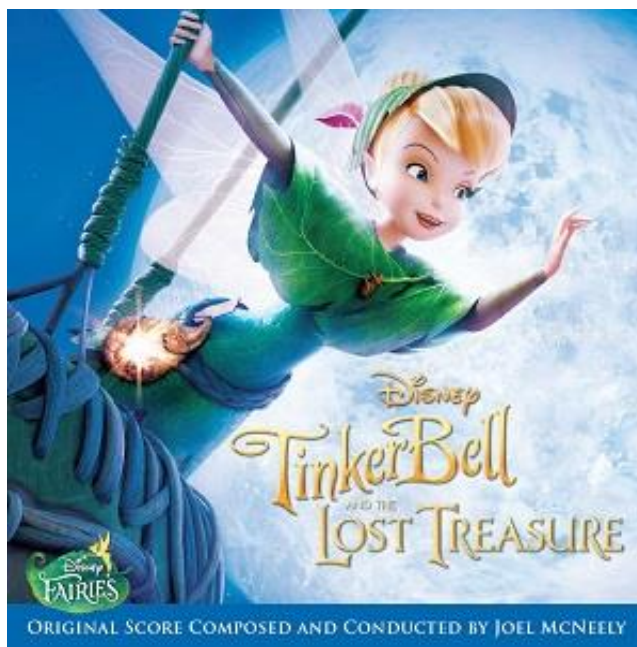




Announces:



TINKER BELL AND THE LOST TREASURE
Composed and Conducted by **JOEL McNEELY**
Disney/Intrada D002115502

I cannot begin to express the magic and emotion that happens right before your eyes when Joel picks up his baton and a 120-piece orchestra begins to play his notes. – Klay Hall, Director

For the 2009 sequel, *Tinker Bell and the Lost Treasure*, composer Joel McNeely returns to the helm as the series composer, composing a large-scale score for massive orchestra performed by Hollywood's finest, plus chorus, Celtic violinist and ethnic woodwinds (performed by McNeely himself). A song album was initially released in 2009, but did not feature any of McNeely's score. This releases focuses primarily on the epic, soaring and rambunctious score, but also includes several of the film's vocals, including "If You Believe," "Fairy Tale Theatre," "The Gift of a Friend," and "Where the Sunbeam Plays."

In this second installment, Pixie Hollow has entrusted Tinker Bell (Mae Whitman) with ensuring their magical moonstone keeps their pixie dust in plentiful supply. Where Tink goes, trouble follows and she accidentally breaks the moonstone. Only an enchanted mirror and some assistance from pestering pixie Terence (Jesse McCartney) can help Tink get the moonstone back together...

Disney/Intrada D002115502
Released February 2015