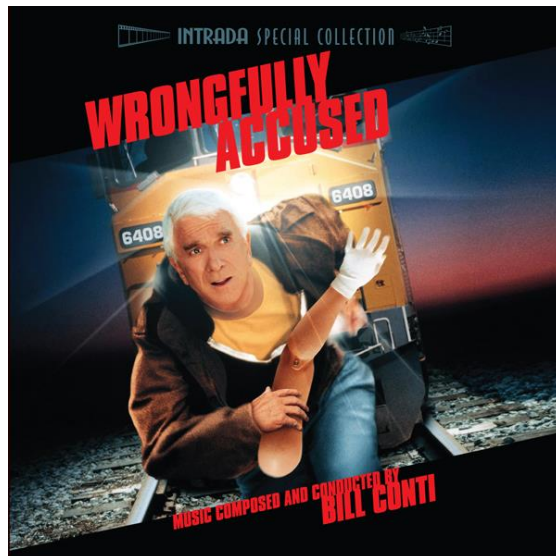




Announces:



WRONGFULLY ACCUSED

Composed and Conducted by **BILL CONTI**
Intrada Special Collection Volume ISC 162

The 1998 Morgan Creek feature *Wrongfully Accused*, starring Leslie Nielsen, is a frenetic satire of many of its contemporaries. Woven into its central *The Fugitive* satire would be references to *Fatal Attraction*, *A Clear and Present Danger*, *Mission: Impossible*, *North by Northwest*, *Braveheart* and *Titanic*, the most obvious among some 35 spoofs on hand for Bill Conti to tackle. But what would distinguish the seriously sly musical homages in *Wrongfully Accused* was just how old school they could be, with an overarching tone that dipped into the romantic 1940's well of *Casablanca* and Franz Waxman's *Dark Passage*, not to mention the hard-boiled film noir stylings of such Miklos Rozsa scores as *The Asphalt Jungle* and *The Naked City*. Conti was sure to combine strong character themes with grippingly overblown orchestral suspense, giving the score a cohesiveness that also helped glue its stream-of-consciousness sight gags together. Scored for large orchestra and running over 60 minutes, the diverse score features a bittersweet love theme, relentless music for the manhunt sequences, straight-laced action music, and the highlight, a virtual violin concerto for the lengthy opening concert hall sequence. It makes for an exciting musical journey that on its own would give no indication it was composed for a satire, for the maestro Conti knows that things can be funnier to the audience when played straight.

This Intrada release features the complete score from the original stereo session masters and is limited to 1500 units.

Intrada Special Collection Volume ISC 162
Released March, 2011