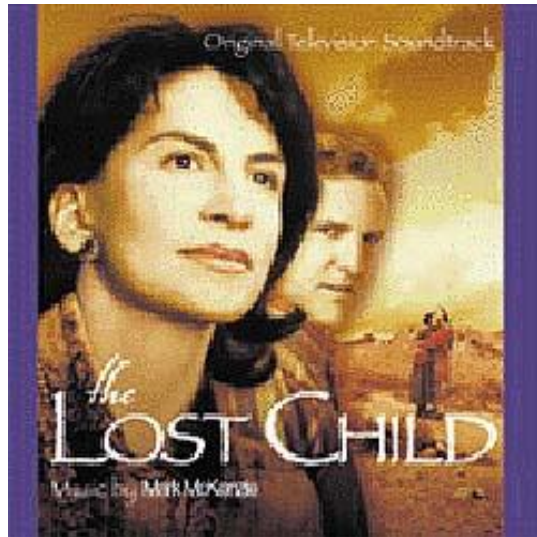




Announces:



**THE LOST CHILD**  
Composed by **MARK MCKENZIE**  
Intrada MAF 7091

The hallmark of a Hallmark Hall of Fame production is its emphasis on the emotions and inner turmoil of the human character. *The Lost Child* is no exception, telling the true story of a Native American woman who discovers unconditional love, a nurturing spiritual heritage, and her father's affirmation. It vividly displays the power and strength of a loving, emotionally, and spiritually connected family.

Mark McKenzie composed a melodic score that was both pastoral and emotional, providing *The Lost Child* with a score that perfectly underlies the human drama.

As director Karen Arthur describes it, "Mark's score is epic yet intimate, surrounding and supporting the vistas as it infuses the characters and the story with deep emotion. Lush, lyrical and intensely human...it is timeless." The score includes numerous solos for harp, cello, piano, classical guitar, flute, oboe, and clarinet, often backed with underlying muted strings.

Intrada MAF 7091  
Released November 28, 2000